



SAMUEL WOOD



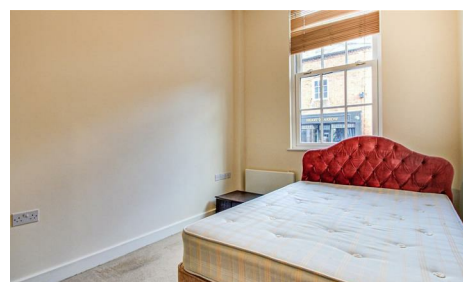
32 St Johns Hill

Shrewsbury, Shropshire, Shropshire, SY1 1JJ

£850 Per Month



MANAGED BY SAMUEL WOOD. Well-presented, unfurnished, ground floor town centre maisonette with allocated parking in a gated courtyard.



CONTEMPORARY AGENCY • TRADITIONAL VALUES

propertymark

MAYFAIR
OFFICE.CO.UK

rightmove

onTheMarket.com



- town centre location
- allocated gated parking space
- ground floor apartment
- one bedroom

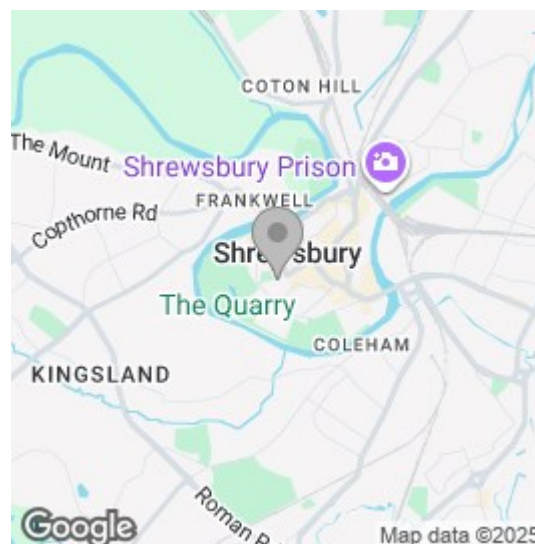
An attractive and well-appointed ground floor maisonette, ideally situated in the heart of Shrewsbury with the rare benefit of gated parking. The property has its own front door opening directly onto the street, offering the independence and convenience of a house while enjoying the ease of apartment living.

(Please note, the property comes unfurnished)

Inside, there is an open-plan living room and kitchen, a double bedroom, and a bathroom with a bath and shower over. The kitchen includes a built-in oven and hob, with space for a washing machine and under-counter fridge.

Perfectly placed for town centre living, the property is within easy walking distance of Quarry Park, shops, restaurants, and all the amenities that Shrewsbury has to offer.

Area Map



We take every care in preparing our sales details. They are checked and usually verified by the Vendor. We do not guarantee appliances, alarms, electrical fittings, plumbing, showers etc. You must satisfy yourself that they operate correctly. Room sizes are approximate; they are usually taken in metric and converted to imperial. Do not use them to buy carpets or furniture. We cannot verify the tenure, as we do not have access to the legal title; we cannot guarantee boundaries or rights of way so you must take the advice of your legal representative. No person in the employment of or representing Samuel Wood has any authority to make any representation or warranty whatever in relation to this property. If there is any point which is of particular importance to you, please contact the office and we will be pleased to check the information. Do so particularly if contemplating travelling some distance to view. Applicants are advised that the majority of our shots are taken with a wide angle lens.

2 Shoplatch, Shrewsbury, Shropshire, SY1 1HF
Tel: 01743 272710 | shrewsbury@samuelwood.co.uk

www.samuelwood.co.uk